

Perfect Extinguishing Automation...

Conventional Fire Extinguishing Control Panel

Conventional series fire extinguishing control panel operates on cross-zone principle, has 4 detection zones and one extinguishing release output which is programmable according to the zone requirements. Conventional extinguishing control panel is microprocessor controlled, offers high performance and can easily be integrated into all extinguishing projects.

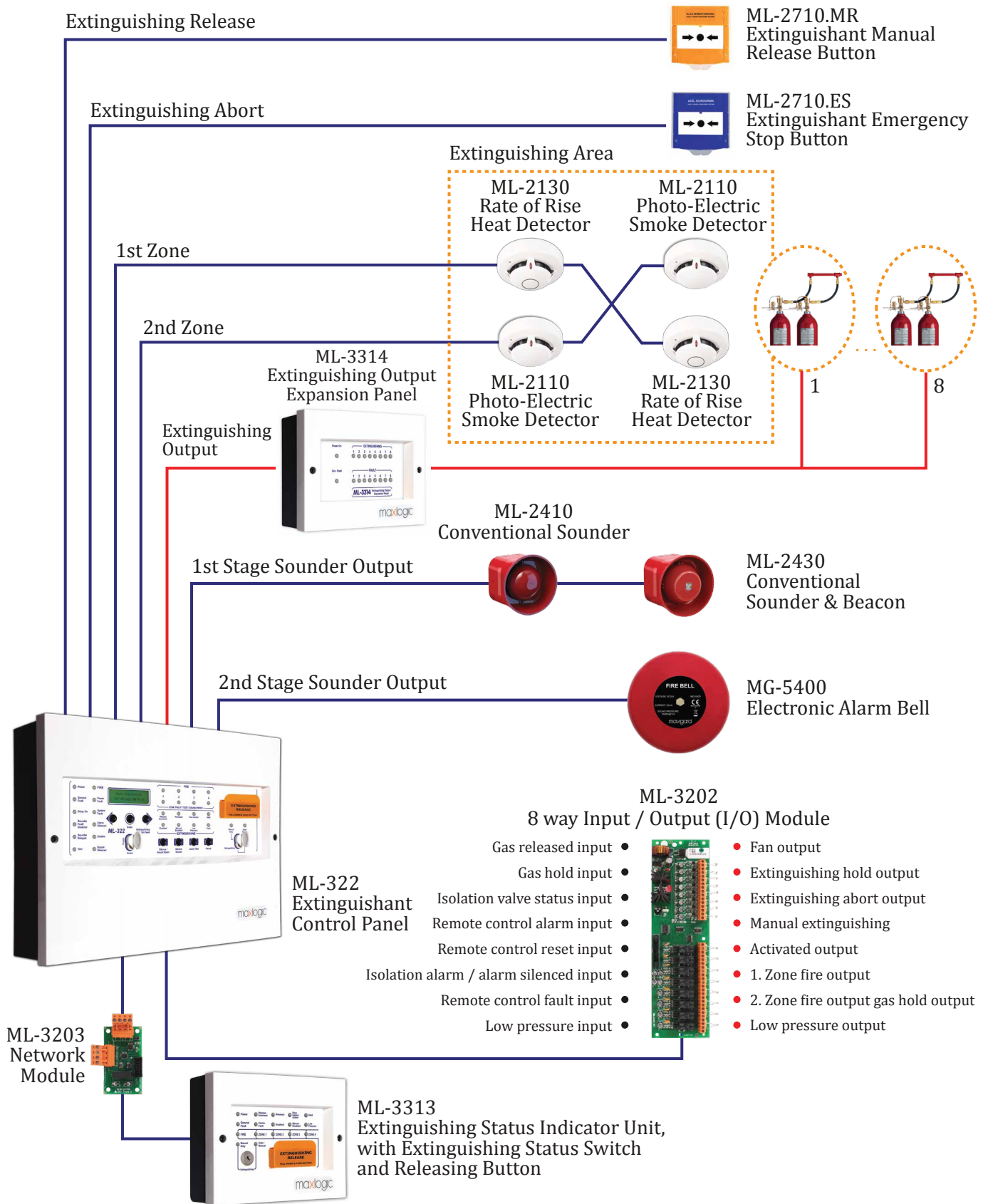


ML-322
Fire extinguishing
control panel

ML-3313
Extinguishing status indicator unit,
with extinguishing status switch
and releasing button

- ▶ Compatible with EN 12094-1, EN 54-2 and EN 54-4 standards
- ▶ 4 detection zones, 1 extinguishing zone
- ▶ Extinguishing-related front panel LEDs and LCD screen provide full system information
- ▶ Display of two warnings from two devices on the detection zones with fire zone LED
- ▶ Up to 8 pcs extinguishant condition indicator units can be connected to one pcs fire extinguishing panel

Conventional Fire Extinguishing System Diagram



Conventional Extinguishing System Accessories



ML-2410 Conventional Sounder

Maxlogic series conventional sounders provide stable performance in indoor applications and are compatible with all conventional panels.

- ▶ Compatible with EN 54-3
- ▶ Surface mount or flush mount
- ▶ Adjustable different 32 voice tone options
- ▶ Low or high voice power control
- ▶ Microprocessor controlled



ML-2710.ES Extinguishant Emergency Stop Button ML-2710.MR Extinguishant Manual Release Button

Easy to use, innovative test key designed according to EN 12094-3, advanced technology resetting function and the features of the extinguishing emergency stop button having practical accessories are below.

- ▶ Compatible with EN 12094-3
- ▶ Compatible with surface and flush mounting
- ▶ Easily resettable
- ▶ IP22D protection class



ML-3314 Extinguishing Output Expansion Panel

Extinguishing output expansion panel is used to increase the sounder output number by connecting to extinguishing output.

- ▶ Outputs can be activated as one by one according to determined delay and extinguishing time
- ▶ 8 supervised extinguishing outputs
- ▶ Determined number of extinguishig outputs are made with connecting the panels as serial



ML-2420 / ML-2430 Conventional Beacon / Sounder & Beacon

Maxlogic series conventional sounder beacon generates audible and visual signal, in addition to these features.

- ▶ Compatible with EN 54-3 and EN 54-23
- ▶ Adjustable different 32 voice tone options
- ▶ Adjustable flash frequency and coverage area
- ▶ White, strong LED flasher



ML-2110 / ML-2120 / ML-2130 / ML-2140 Conventional Photo-Electric / Fixed Heat / Rate of Rise Heat / Multi-Sensor Detectors

Ergonomic and user friendly conventional fire alarm detectors are designed for maximum protection with their stability and sensitivity.

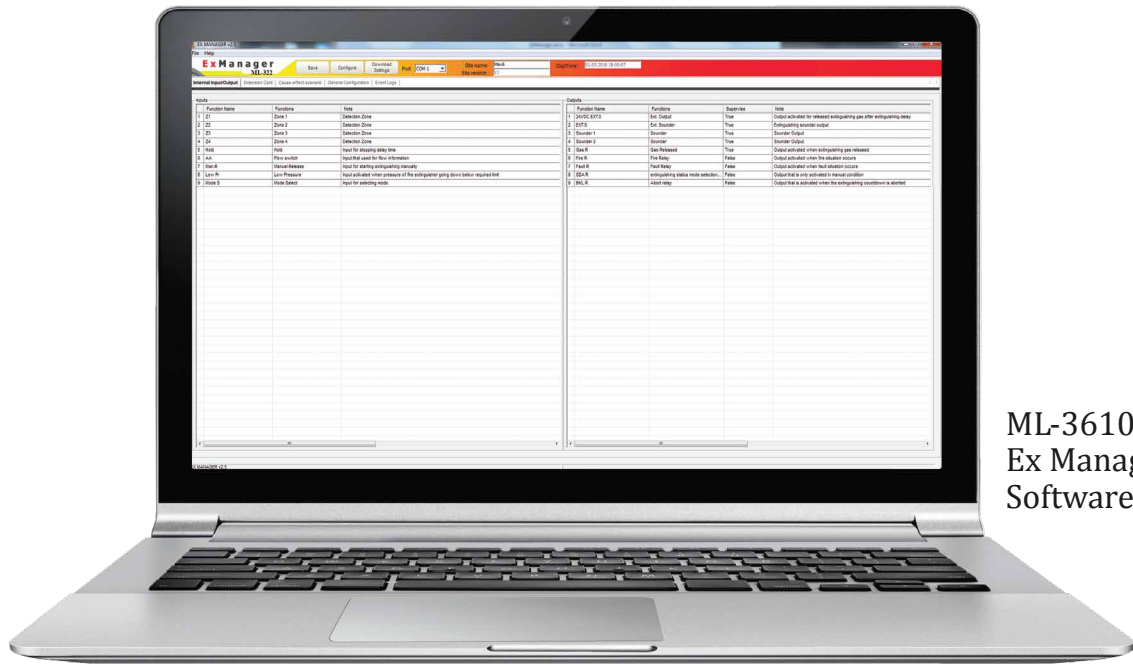
- ▶ Compatible with EN 54-5 and EN 54-7 standards
- ▶ Twin LED indicators for 360° view
- ▶ Microprocessor controlled
- ▶ Remote indicator output
- ▶ 2 pcs red LEDs



MG-5400 Electronic Alarm Bell

Fire alarm bell is a product that can be used by all systems, from intelligent addressable fire alarm systems to conventional fire alarm systems carrying Mavigard and Maxlogic brand.

- ▶ Compatible with EN 54-3
- ▶ It generates an audible signal when it generates a warning signal in fire alarm panels and is suitable for indoor use.



ML-3610 Ex Manager Software

- ▶ Adjustable first level delay time to sounders
- ▶ Adjustable delay time to detection zones
- ▶ Configurable delay and extinguishing time
- ▶ Non-latching zone option
- ▶ Countdown clock until the starting of extinguishing
- ▶ Fire and fault LEDs for each detection zone
- ▶ Supervised zone detection inputs, extinguishing hold input, extinguishing abort input, extinguishing activation input, low pressure input
- ▶ Real time clock
- ▶ Supervized extinguishing output, second level sounders, gas active output
- ▶ Extinguishing mode can be changed remotely with extinguishing status key input
- ▶ Fire and fault relays
- ▶ Dry contact relay output for fire and fault
- ▶ Dry or energized contact options for outputs
- ▶ Favorable structure for integration with mechanical systems
- ▶ Cross-zone operation can be selected to be active/passive via PC software
- ▶ Up to 1000 events log memory
- ▶ Event log can be monitored via PC software
- ▶ Sending event log via RS-232 to PC or printer
- ▶ There are two extinguishing operating types; automatic and manual or manual only
- ▶ Detection zones can be tested or disabled, 1st and 2nd level sounder output, extinguishing system and manual extinguishing disable options
- ▶ Inputs and outputs of panel, inputs and outputs of expansion module can be programmed via special PC software. Many features can be assigned such as gas active for outputs, remote alarm for inputs, remote reset.

PANEL MODELS

Product code	Detection zone	Extinguishing zone
ML-322	4	1

ACCESSORIES

Product code	Description
ML-3313	Extinguishing status indicator unit, with extinguishing status switch and releasing button
ML-3314	Extinguishing output expansion panel
ML-3610	Ex Manager software for ML-322
ML-2110	Conventional photo-electric smoke detector
ML-2120	Conventional fixed heat detector
ML-2130	Conventional rate of rise heat detector
ML-2140	Conventional multisensor detector
MG-5400	Electronic alarm bell
ML-2410	Conventional sounder
ML-2420	Conventional beacon
ML-2430	Conventional sounder & beacon
ML-2710.MR	Extinguishant manual release button
ML-2710.ES	Extinguishant emergency stop button
ML-3202	8 way input / output (I/O) module
ML-3203	Network module

Follow us...



www.mavili.com.tr/en

