

CWIEME BERLIN

Transformers | Motors | Generators

11-13 MAY 2027

● A Hyve Event

Showcase your products at the global meeting place for the electrical manufacturing supply chain.

Welcome

6,000+
visitor footfall

430+
exhibitors

40%
of all our visitor
attendee types only
attend CWIEME Berlin

72%
of our Engineering,
Procurement, and R&D
attendees are evaluating or
looking to buy components,
raw materials, or process
machinery in the next
12 months

83
countries attended

11,700
community footfall

175+
speakers

85%
of our Engineering,
Procurement, and R&D
attendees are involved
in purchasing decisions

63%
of our visitor audience come
to CWIEME Berlin actively
working on a live project
and/or managing a live
project whilst also planning
for future initiatives

Top attending
countries:
Germany, Italy,
Poland, China,
Türkiye

*Above statistics are based off CWIEME Berlin 2026 registration and/or post-event survey data

At the forefront of the global electrical revolution, CWIEME Berlin proudly holds the title of the world's largest exhibition dedicated to coil winding, transformer, generator, electric motors, e-mobility, and grid delivery.

CWIEME Berlin brings together all elements of the electrical manufacturing supply chain – it is where sales and future partners are made.

CWIEME's Top Product Sectors



Winding
Systems
& Supplies



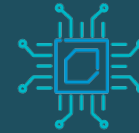
Insulation &
Shielding
Materials



Intermediate
Semi-finished
Products &
Materials



Magnets &
Magnetic
Materials



Electronic &
Electrical
Components



IT & Software



Transformer
Manufacturing
Machinery &
Systems



Quality, Test &
Measurement



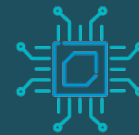
Other Machines &
Manufacturing
Systems



Motor
Components &
Accessories



Power Supplies



Electromechanical
Components



Transformer
Components &
Accessories



Services

Learn about CWIEME's Audience

Top Industries

Power Generation, Transmission, and Distribution
Industrial Machinery
Automotive & E-mobility
Aerospace & Aviation
Consumer Electronics

Top Job Functions

Research & Development
Electrical Engineering
Technical Engineering
Production & Manufacturing
Design Engineering & Product Design

Top 5 attending visitor countries (after Germany)

Italy
Poland
China
Türkiye
UK

Top Reasons for Attending

Network and make **new contacts**
Meet existing **customers and partners**
Buy and source **new products**

Top visiting companies

50HERTZ

ABB

AMETEK

elia
| Elia Group

GE VERNOVA

HITACHI

Schneider
Electric

SIEMENS
energy

TRENCH

UK
Power
Networks

MEG

CWIE ME Initiatives

The Women in Engineering programme provides a platform for dialogue, raising awareness, and supporting the industry's efforts to create more inclusive and equitable workplaces for employees.

CWIE ME
WOMEN IN ENGINEERING

The Innovation Zone is a dynamic area designed to spotlight pioneering companies and ground-breaking solutions that are shaping the future of the electrical and transformer industries.

CWIE ME
INNOVATION ZONE

The Future Engineers programme bridges the talent gap by bringing together faculty and students, where participants will not only leave with a deeper understanding of the industry, but also with a network, practical skills, and inspiration for future innovations.

CWIE ME
FUTURE ENGINEERS

Through our CWIEME Talks platform, we offer a wealth of resources, from engaging talks with leading industry professionals to in-depth whitepapers that provide actionable strategies and deep dives into the latest trends and innovations.

CWIE ME
TALKS

CWIEME Initiatives

Transmission & Distribution Club brings together industry leaders, engineers, and procurement professionals to network, collaborate, and conduct business in a focused environment. The lounge is exclusive to OEMs, TSOs, and Grid Operators, and provides a central hub for discussions on grid innovation, power transmission, and energy distribution.

The C-Suite Club is designed for senior executives, thought leaders, and key decision-makers in the electromechanical, energy, and manufacturing industries and with a tailored agenda covering Transformers, Electric Motors, and Emerging Technologies, participants will engage in conversations under the Chatham House Rule to ensure open, candid dialogue.

The Academic Excellence Hub is a dedicated platform bridging academia and industry together, providing a stage for researchers, students, and professionals to showcase groundbreaking studies, discuss emerging technologies, and explore future trends.

The Electric Motor Forum is a dedicated platform for industry leaders, innovators, and engineers to explore the future of electric motor technologies across automotive, industrial, and energy sectors. This brand new forum goes beyond content presentations to become a fully integrated hub, designed to elevate the motors sector presence and maximise engagement with a highly-focused audience.

Learn at CWIEME

2 stages

69 sessions

175+ speakers

3,000+

content attendees to the Central Grid & Electric Motor Forum

61%

of overall visitors attended content



Central Grid

Most attended sessions:

Panel Discussion: Navigating Geo-Political Risks & Global Competition in the Transformer Industry: OEM, Industry, and Utility Perspectives

Keynote Speech: Advancing Resilient, Affordable, and Clean Energy Through Transmission and Distribution Innovation



Electric Motor Forum

Most attended sessions:

EEMODS Open Plenary Sessions

Panel Discussion: Electric Motors at a Crossroads: Manufacturing, Materials & Market Realities Ahead

Stand Solutions

Shell Scheme

9-18sqm includes...

- Grey carpet tiles — excluding plastic covering
- White system wall elements in aluminum frame 250cm high
- White fascia 40cm deep
- White name board per open side in black lettering
- 1x 120 watt spotlight fitting and bulb per 4sqm Stand cleaning on final build day only
- 1 table with a white round top — albarredo 70cm high
- 2 chairs with a black fabric seating — asti chairs
- 1 white lockable counter — bern lockable counter
- 1 waste bin — abano
- 1x 3.3kw mains connection including 1x 1kw socket

Pricing from...

Stand 9sqm: €7,488

Marketing Package: €1,750

Insurance fee: €210

Total: €9,448

Stand 12sqm: €9,984

Marketing Package: €1,750

Insurance fee: €210

Total: €11,944



Marketing Package

- Branding on the CWIEME website.
- Online Exhibitor Directory and Product Listing.
- Listing on the CWIEME Mobile App.
- Listing on the printed Navigation Maps (onsite).
- Access to the CWIEME Event App: Gain insight into registered attendees and proactively message potential new customers.
- Lead Scan App for your team: Capture and manage leads efficiently with a single app shared across your team.

Stand solutions

Show Ready

- Effective and stylish
- Stress-free, no need to appoint a stand builder. Just send us the wall artwork and choose the carpet colour. Eco-sustainable, every part of the Show Ready package is recyclable. Nothing goes to waste.

Show Ready package

- Full-colour tension graphics
- 2 x 500w single sockets
- LED arm lights (1 x 1.5 linear metre)
- Velour carpet (choice of colours)
- Storage Room
- Project management
- Installation, dismantling, and transportation
- Furniture can be ordered additionally

Pricing from...

Stand 9sqm: €9,234

Marketing Package: €1,750

Insurance fee: €210

Total: €11,194

Stand 12sqm: €12,312

Marketing Package: €1,750

Insurance fee: €210

Total: €14,272



Marketing Package

- Branding on the CWIEME website.
- Online Exhibitor Directory and Product Listing.
- Listing on the CWIEME Mobile App.
- Listing on the printed Navigation Maps (onsite).
- Access to the CWIEME Event App: Gain insight into registered attendees and proactively message potential new customers.
- Lead Scan App for your team: Capture and manage leads efficiently with a single app shared across your team.

Sponsor at CWIEME

| Package | No. of Packages Available | Price |
|---|-------------------------------------|------------------|
| Branding – Mega Banners | 3x without screens, 2x with screens | From €13,250 |
| Branding – Window Branding, Upper Level | 4x double-sided slots | From €10,500 |
| Branding – Middle Foyers | 4x | From €5,750 |
| Branding – Linkway Banners | On request | From €6,250 |
| Branding – Navigation Sponsor | 1x | €10,500 |
| Branding – Registration Sponsor | 1x | From €29,250 |
| Branding – Attendee Bags | 1x | From €16,250 |
| Branding – Lanyards | 1x | From €16,250 |
| Branding – Beer Garden | 2x | Price on request |
| Branding – Welcome Party | 1x | Price on request |

Sponsor at CWIEME

| Package | No. of Packages Available | Price |
|---|---------------------------|------------------|
| Content – Central Grid (Headline) | 1x | €27,250 |
| Content – Electric Motor Forum (Headline) | 1x | €27,250 |
| Content – Central Grid (Session) | 10x | From €7,750 |
| Content – Electric Motor Forum (Session) | 10x | From €7,750 |
| Content – Future Engineers Programme | 1x | €15,500 |
| Content – Women in Engineering Programme | 1x | €15,500 |
| Digital – Mobile Event App | 1x | From €15,500 |
| Digital – Event Venue WIFI | 1x | From €15,500 |
| Grid Delivery Summit – Supporting Partner | On request | Price on request |
| Grid Delivery Summit – Core Partner | On request | Price on request |
| Grid Delivery Summit – Founding Partner | On request | Price on request |

Testimonials



We attend CWIEME Berlin because it's a key show for the transformer industry, which is becoming more and more focused on reducing losses, reducing temperature and increasing equipment efficiency. Over the three days we want to establish new contacts and also reconnect with the people that we see here every year. This is the place to seal contracts – it's where procurement and suppliers get to mix.

Hugo Campelo,
Senior Technical Advisor,
Nynas AB



We've been exhibiting at CWIEME for many years, and it remains one of the key meeting points for the entire transformer industry, bringing together customers, service centres and manufacturers from across the market, so it's always a valuable opportunity to connect face to face. For us, CWIEME is simply the established place to be – our customers come to Berlin every year, and the show has become the central hub for the industry.

Felix Wacker
sales manager, transformer
lines at Heinrich Georg



All our biggest suppliers are here, so we have fun, we meet the people we need to meet and there's always something new to take home.

Every time I come, it's clean, great suppliers, a good atmosphere. People are enjoying it. That's what I like about it.

Renzo Exequiel Gagliano
Procurement General
Manager, ARTRANS
S.A. TRUMPF Hüttinger GmbH
+ Co. KG



I'm quite new to the industry, so my objective this week is to find new suppliers for the commodities that I manage. It's been good to touch base with existing suppliers and be put in touch with potential new suppliers.

Hub 27 as a whole was actually really good. I felt like it was buzzing in there, there was a lot going on, there was a lot of existing suppliers in there for me. So it was good to see some of their innovation, their tech and so forth.

Kirsty Smith
Lead Commodity
Management Specialist, GE
Vernova

We are looking forward to discussing in more detail how CWIEME can support your business.



NICOLA ACAMPORA

Head of Growth

T: +44 (0)203 5459792

M: +44 (0)7702 809683

E: Nicola.Acampora@coilwindingexpo.com



MARK JANAWAY

Sales Manager,

Turkey, India, USA & Middle East

T: +44 (0)203 5459798

M: +44 (0)7778 612634

E: Mark.Janaway@coilwindingexpo.com



DYLAN GAFORI

Sales Manager, DACH

T: +44 20 3545 9440

E: Dylan.Gafari@cwimeevents.com



LINHUI KANG

Sales Manager, APAC

T: 0086 53308863

M: 0086 17717068115

E: Linhui.Kang@coilwindingexpo.com



CHRISTOPH BREIMANN

Sales Manager, DACH

T: +44 (0) 2035459482

E: Christoph.Breimann@cwimeevents.com



CHRIS CHEN

Sales Executive

T: 0086 6335 1063

M: 0086 13012822832

E: Chris.Chen@cwimeevents.com

CWIEME BERLIN

Transformers | Motors | Generators

11-13 MAY 2027

● A Hyve Event

Find out more at berlin.cwimeevents.com