

# CWIEME BERLIN

Transformers | Motors | Generators

11-13 MAY 2027

● A Hyve Event

Showcase your products at the global meeting place for the electrical manufacturing supply chain.

# Welcome

5,789  
visitor footfall

496  
exhibitors

58%  
Engineering,  
Procurement and R&D  
visitors only attend  
CWIEME

74%  
Of attendees are looking  
to buy products and  
solutions in the next  
12 months

87  
countries attended

12,421  
community footfall

92  
speakers

83%  
Engineering,  
Procurement and R&D  
visitors are involved in  
purchasing decisions.

69%  
Of attendees are actively  
working on a live project  
whilst also planning for  
future in the next  
6+ months

Top attending  
countries:  
Germany, Italy,  
Poland, China,  
Türkiye

\*2025 stats featured

**At the forefront of the global electrical revolution, CWIEME Berlin proudly holds the title of the world's largest exhibition dedicated to coil winding, transformer, generator, electric motor manufacturing, and e-mobility**

CWIEME Berlin brings together all elements of the global coil winding, transformer, electric motor, generator, and e-mobility supply chain – it is where sales and future partners are made.

# CWIEME's Top Product Sectors



Winding  
Systems  
& Supplies



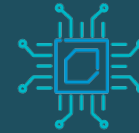
Insulation &  
Shielding  
Materials



Intermediate  
Semi-finished  
Products &  
Materials



Magnets &  
Magnetic  
Materials



Electronic &  
Electrical  
Components



IT & Software



Transformer  
Manufacturing  
Machinery &  
Systems



Quality, Test &  
Measurement



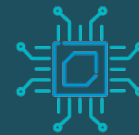
Other Machines &  
Manufacturing  
Systems



Motor  
Components &  
Accessories



Power Supplies



Electromechanical  
Components



Transformer  
Components &  
Accessories



Services

# Learn about CWIEME's Audience

## Top Industries

Power Generation and Distribution: 26%  
Industrial Machinery: 18%  
Automotive & E-mobility: 17%  
Consumer Electronics: 8%  
Aerospace & Aviation: 7%  
Military & Defence: 6%  
Medical Equipment: 6%  
HVAC (Heating, Ventilation, and Air Conditioning): 6%  
Other: 5%

## Top Job Functions

Design Engineering & Product Design  
Research & Development  
Production & Manufacturing  
Electrical Engineering  
Technical Engineering  
General & Corporate Management  
Mechanical Engineering  
Procurement, Supply Chain & Logistics  
Industrial Engineering

## Top 5 attending visitor countries (after Germany)

Italy  
Poland  
China  
Türkiye  
UK

## Top Reasons for Attending

Network and make **new contacts**  
Meet existing **customers and partners**  
Buy and source **new products**

## Top visiting companies



SIEMENS  
energy

SEW  
EURODRIVE

Schneider  
Electric

Rolls-Royce

Nidec  
NIDEC MOTOR CORPORATION



BOSCH

GE  
GE VERNOVA

HYUNDAI

ABB

TOYOTA

Hitachi Energy

# CWIE ME Initiatives

The Women in Engineering programme provides a platform for dialogue, raising awareness, and supporting the industry's efforts to create more inclusive and equitable workplaces for employees.

**CWIE ME**  
WOMEN IN ENGINEERING

The Innovation Zone is a dynamic area designed to spotlight pioneering companies and ground-breaking solutions that are shaping the future of the electrical and transformer industries.

**CWIE ME**  
INNOVATION ZONE

The Future Engineers programme bridges the talent gap by bringing together faculty and students, where participants will not only leave with a deeper understanding of the industry, but also with a network, practical skills, and inspiration for future innovations.

**CWIE ME**  
FUTURE ENGINEERS

Through our CWIEME Talks platform, we offer a wealth of resources, from engaging talks with leading industry professionals to in-depth whitepapers that provide actionable strategies and deep dives into the latest trends and innovations.

**CWIE ME**  
TALKS

# CWIEME Initiatives

Transmission & Distribution Club brings together industry leaders, engineers, and procurement professionals to network, collaborate, and conduct business in a focused environment. The lounge is exclusive to OEMs, TSOs, and Grid Operators, and provides a central hub for discussions on grid innovation, power transmission, and energy distribution.

The C-Suite Club is designed for senior executives, thought leaders, and key decision-makers in the electromechanical, energy, and manufacturing industries and with a tailored agenda covering Transformers, Electric Motors, and Emerging Technologies, participants will engage in conversations under the Chatham House Rule to ensure open, candid dialogue.

The Academic Excellence Hub is a dedicated platform bridging academia and industry together, providing a stage for researchers, students, and professionals to showcase groundbreaking studies, discuss emerging technologies, and explore future trends.

The Electric Motor Forum is a dedicated platform for industry leaders, innovators, and engineers to explore the future of electric motor technologies across automotive, industrial, and energy sectors. This brand new forum goes beyond content presentations to become a fully integrated hub, designed to elevate the motors sector presence and maximise engagement with a highly-focused audience.

# Learn at CWIEME

2 stages

77  
sessions

92  
speakers

2,100+

Content attendees to the  
E-Mobility & Central  
Stage

38%

of overall visitors  
visited content



## Central Grid

Most attended sessions:  
Supply-Demand Dynamics in the  
Transformer Market: Trends, Challenges,  
and Opportunities (PTR)

Driving Sustainable and Low-  
Carbon Supply Chains: Baosteel's  
Green Development Strategy & Low-  
Carbon Metallurgical Practices in  
Baosteel Silicon Steel



## Electric Motor Forum

Most attended session:  
The Global Evolution of The Electric  
Motor Supply Chain and Technology  
Development: Evolving Landscape

Michael Southcott, Manager,  
Propulsion & E-Mobility Component  
Research, Automotive Supply Chain  
& Technology, S&P Global Mobility

# Stand Solutions

## Shell Scheme

9-18sqm includes...

- Grey carpet tiles — excluding plastic covering
- White system wall elements in aluminum frame 250cm high
- White fascia 40cm deep
- White name board per open side in black lettering
- 1x 120 watt spotlight fitting and bulb per 4sqm Stand cleaning on final build day only
- 1 table with a white round top — albarredo 70cm high
- 2 chairs with a black fabric seating — asti chairs
- 1 white lockable counter — bern lockable counter
- 1 waste bin — abano
- 1x 3,3kw mains connection including 1x 1kw socket

Pricing from...

Stand 9sqm: €7,488

Marketing Package: €1,750

Insurance fee: €210

Total: €9,448

Stand 12sqm: €9,984

Marketing Package: €1,750

Insurance fee: €210

Total: €11,944



### Marketing Package

- Branding on the CWIEME website.
- Online Exhibitor Directory and Product Listing.
- Listing on the CWIEME Mobile App.
- Listing on the printed Navigation Maps (onsite).
- Access to the CWIEME Event App: Gain insight into registered attendees and proactively message potential new customers.
- Lead Scan App for your team: Capture and manage leads efficiently with a single app shared across your team.

# Stand solutions

## Show Ready

- Effective and stylish
- Stress-free, no need to appoint a stand builder. Just send us the wall artwork and choose the carpet colour. Eco-sustainable, every part of the Show Ready package is recyclable. Nothing goes to waste.

### Show Ready package

- Full-colour tension graphics
- 2 x 500w single sockets
- LED arm lights (1 x 1.5 linear metre)
- Velour carpet (choice of colours)
- Storage Room
- Project management
- Installation, dismantling, and transportation
- Furniture can be ordered additionally

### Pricing from...

Stand 9sqm: €9,234

Marketing Package: €1,750

Insurance fee: €210

Total: €11,194

Stand 12sqm: €12,312

Marketing Package: €1,750

Insurance fee: €210

Total: €14,272



### Marketing Package

- Branding on the CWIEME website.
- Online Exhibitor Directory and Product Listing.
- Listing on the CWIEME Mobile App.
- Listing on the printed Navigation Maps (onsite).
- Access to the CWIEME Event App: Gain insight into registered attendees and proactively message potential new customers.
- Lead Scan App for your team: Capture and manage leads efficiently with a single app shared across your team.

# Sponsor at CWIEME

Package	No. of Packages Available	Price
Branding – Mega Banners	3x without screens, 2x with screens	From €13,250
Branding – Window Branding, Upper Level	4x double-sided slots	From €10,500
Branding – Middle Foyers	4x	From €5,750
Branding – Linkway Banners	On request	From €6,250
Branding – Navigation Sponsor	1x	€10,500
Branding – Registration Sponsor	1x	From €29,250
Branding – Attendee Bags	1x	From €16,250
Branding – Lanyards	1x	From €16,250
Branding – Beer Garden	2x	Price on request
Branding – Welcome Party	1x	Price on request

# Sponsor at CWIEME

Package	No. of Packages Available	Price
Content – Central Grid (Headline)	1x	€27,250
Content – Electric Motor Forum (Headline)	1x	€27,250
Content – Central Grid (Session)	10x	From €7,750
Content – Electric Motor Forum (Session)	10x	From €7,750
Content – Future Engineers Programme	1x	€15,500
Content – Women in Engineering Programme	1x	€15,500
Digital – Mobile Event App	1x	From €15,500
Digital – Event Venue WIFI	1x	From €15,500
Grid Delivery Summit – Supporting Partner	On request	Price on request
Grid Delivery Summit – Core Partner	On request	Price on request
Grid Delivery Summit – Founding Partner	On request	Price on request

We are looking forward to discussing in more detail how CWIEME can support your business.



**NICOLA ACAMPORA**

Head of Growth

T: +44 (0)203 5459792

M: +44 (0)7702 809683

E: [Nicola.Acampora@coilwindingexpo.com](mailto:Nicola.Acampora@coilwindingexpo.com)



**MARK JANAWAY**

Sales Manager,

Turkey, India, USA & Middle East

T: +44 (0)203 5459798

M: +44 (0)7778 612634

E: [Mark.Janaway@coilwindingexpo.com](mailto:Mark.Janaway@coilwindingexpo.com)

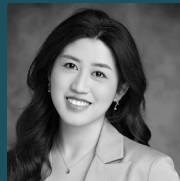


**DYLAN GAFORI**

Sales Manager, DACH

T: +44 20 3545 9440

E: [Dylan.Gafari@cwimeevents.com](mailto:Dylan.Gafari@cwimeevents.com)



**LINHUI KANG**

Sales Manager, APAC

T: 0086 53308863

M: 0086 17717068115

E: [Linhui.Kang@coilwindingexpo.com](mailto:Linhui.Kang@coilwindingexpo.com)



**CHRISTOPH BREIMANN**

Sales Manager, DACH

T: +44 (0) 2035459482

E: [Christoph.Breimann@cwimeevents.com](mailto:Christoph.Breimann@cwimeevents.com)



**CHRIS CHEN**

Sales Executive

T: 0086 6335 1063

M: 0086 13012822832

E: [Chris.Chen@cwimeevents.com](mailto:Chris.Chen@cwimeevents.com)

# CWIEME BERLIN

Transformers | Motors | Generators

**11-13 MAY 2027**

● A Hyve Event

Find out more at [berlin.cwimeevents.com](http://berlin.cwimeevents.com)