

## SPOTLIGHT ON DIGITAL RISK

# Evaluating Digital Risks: The Importance of Cyber Security, Trust and Managing New Risk



**Jayan Perera,**  
Associate Director,  
Control Risks



**Capt. Rahul Khanna,**  
Global Head of Marine Risk  
Consulting, Allianz Global  
Corporate & Specialty



**Carl Odeen,**  
Customer Success Manager,  
Container xChange

23 May 2018

# Evaluating digital risks

The importance of cyber security, trust and managing new risks

**Capt. Rahul Khanna**, Allianz Corporate and Speciality  
**Carl Ödeen**, Container X-change  
**Jayan Perera**, Control Risks



# ▶ Agenda

---

**1.0**      **Introductions**

---

**2.0**      **The threat landscape**

---

**3.0**      **Panel Discussion**

---

**4.0**      **Questions**

---



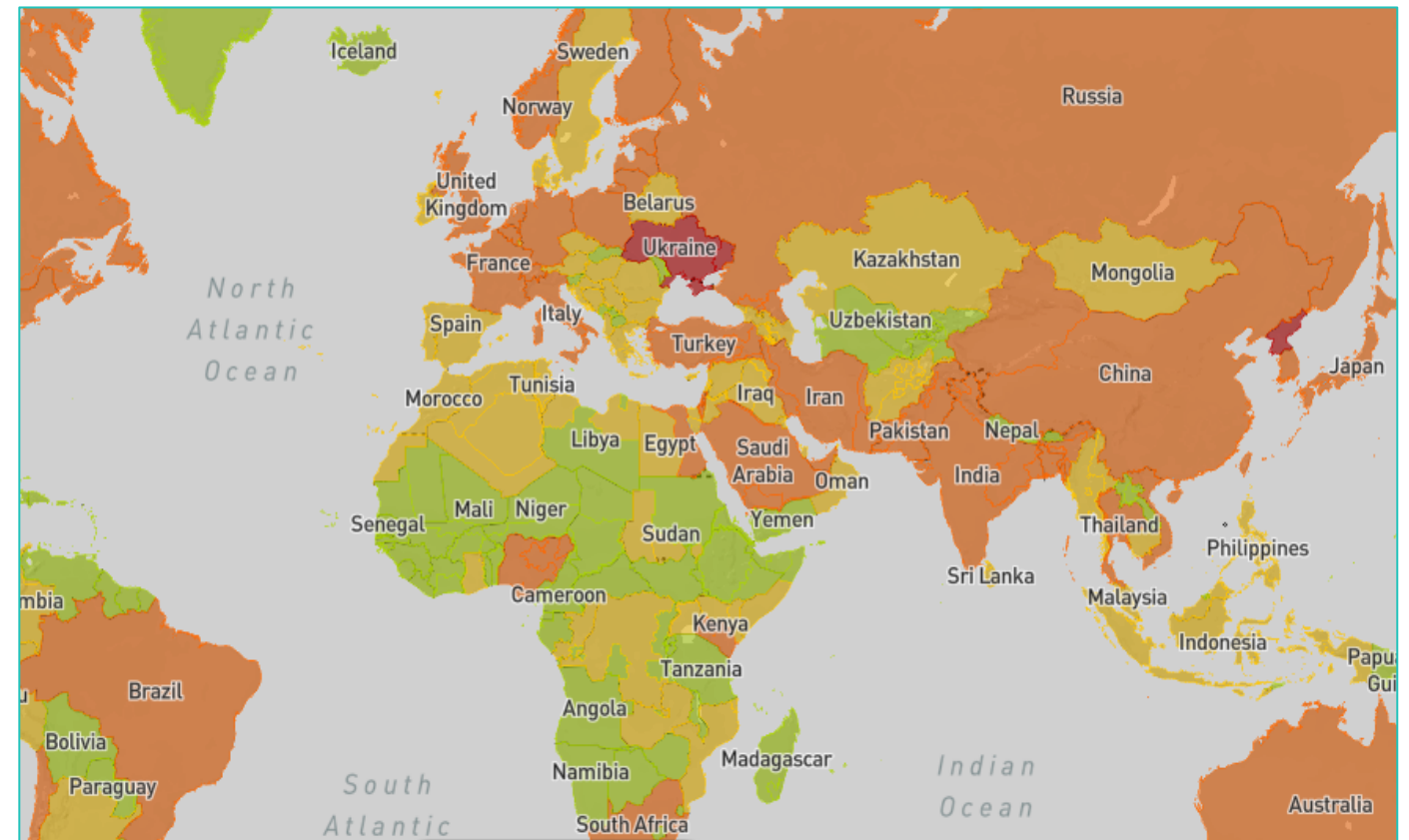
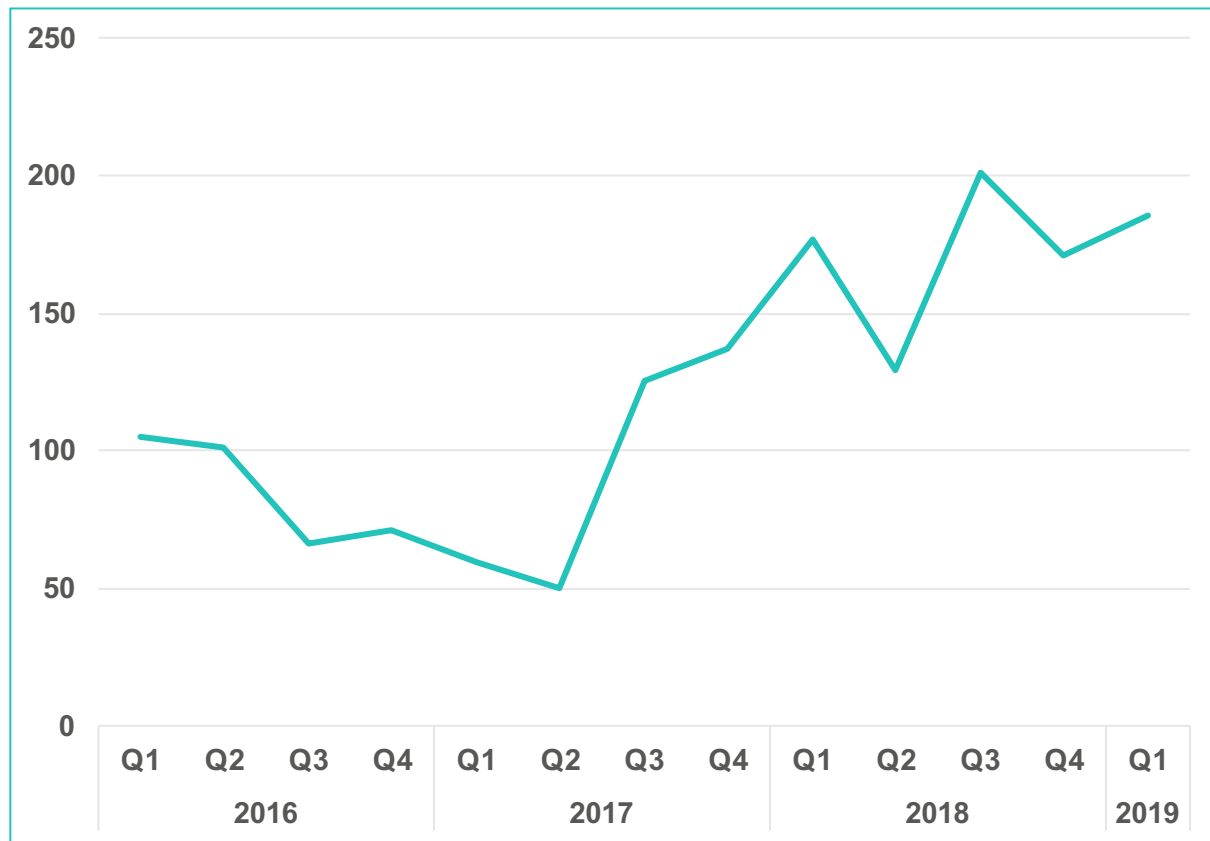
2.0

## The threat landscape





## ► Increase in the number of significant cyber attacks globally 2016 – 2019



## ► Focus on: Maritime cyber attacks



COSCO Shipping Lines confirmed that it has been hit by a cyber attack impacting its internet connection within its offices in America.

## Mass GPS Spoofing Attack in Black Sea?

Troubled waters: Cyber-attacks on San Diego and Barcelona's ports

## Shipping Firms Speared with Targeted 'Whaling' Attacks

Stena Line workers targeted in data hack

**Shipbuilder Austal Suffers Data Breach In Cyber Attack**

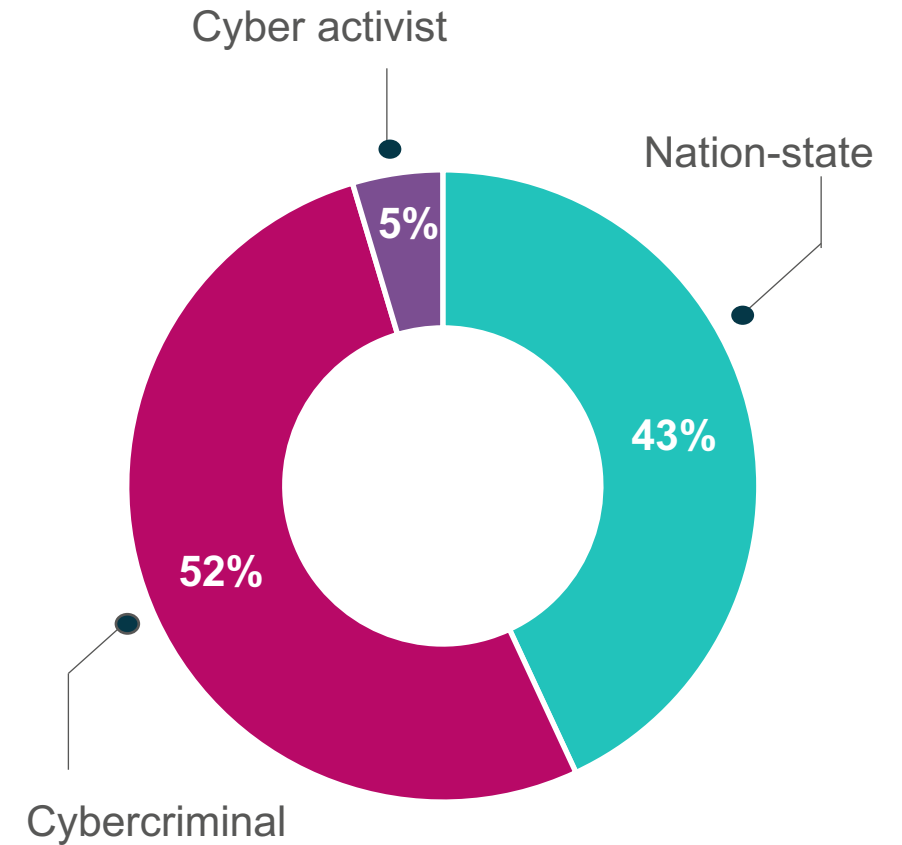
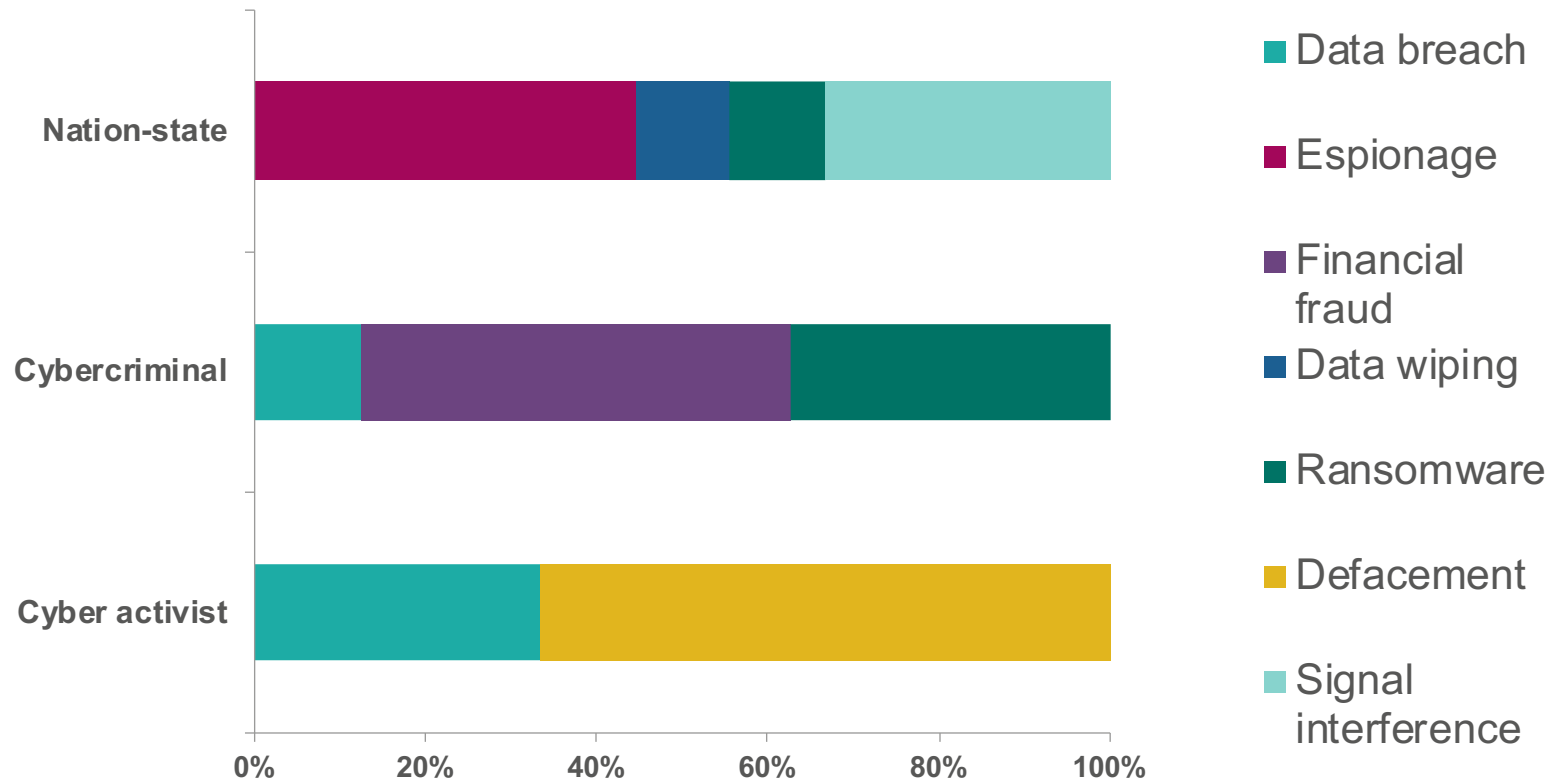
**Shipping company Maersk says June cyberattack could cost it up to \$300 million**

## Gold Galleon hackers target maritime shipping industry

Researchers say a Nigerian hacking group is gleefully plundering maritime shipping businesses and their customers.

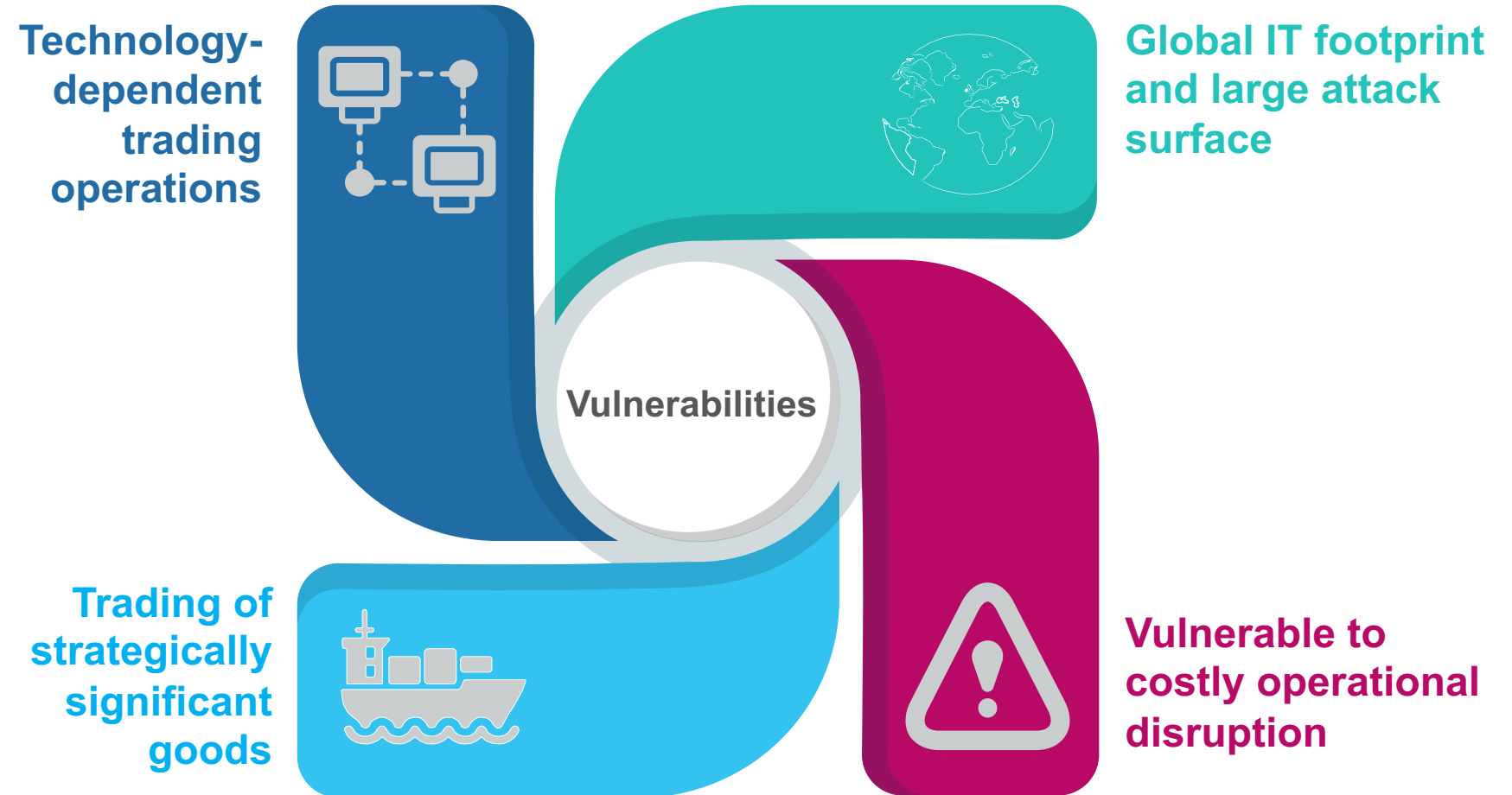
# ▶ Threat actor targeting of the logistics and transport sector

Targeting intent by threat actor type (share of significant attacks, 2016-2019)



## ► Cyber security challenges in the transport and logistics sector

- Increasing digitisation of transport vehicles
- Legacy and pre-internet systems
- Integration of industrial control systems into vehicle networks
- Widespread use of USB memory devices for data sharing
- Lack of publicly available data and incident reporting
- Organisations and supply chains part of critical national infrastructure
- Lack of cyber security awareness, policies and training





3.0

# Panel discussion



TARE 3700 KGS  
NET 28400 KGS  
CU. CAP. 2394 CBM

TARE 3700 KGS  
NET 28400 KGS  
CU. CAP. 2394 CBM

TARE 3700 KGS  
NET 28400 KGS  
CU. CAP. 2394 CBM

TARE 3700 KGS  
NET 28400 KGS  
CU. CAP. 2394 CBM

DFSU 409547

DFSU 4213749  
42G1

DFSU 407057

DFSU 411960  
42G1

MAX. GROSS 32500 KGS  
TARE 3700 KGS  
NET 28800 KGS  
CU. CAP. 2394 CBM

MAX. GROSS 32500 KGS  
TARE 3700 KGS  
NET 28800 KGS  
CU. CAP. 2394 CBM

DFSU 412093  
42G1

DFSU 410892  
42G1

DFSU 404690

DFSU 407443  
42G1

MAX. GROSS 32500 KGS  
TARE 3700 KGS  
NET 28800 KGS  
CU. CAP. 2394 CBM

MAX. GROSS 32500 KGS  
TARE 3700 KGS  
NET 28800 KGS  
CU. CAP. 2394 CBM

MAX. GROSS 32500 KGS  
TARE 3700 KGS  
NET 28800 KGS  
CU. CAP. 2394 CBM



4.0

Questions?

