

1. Introduction

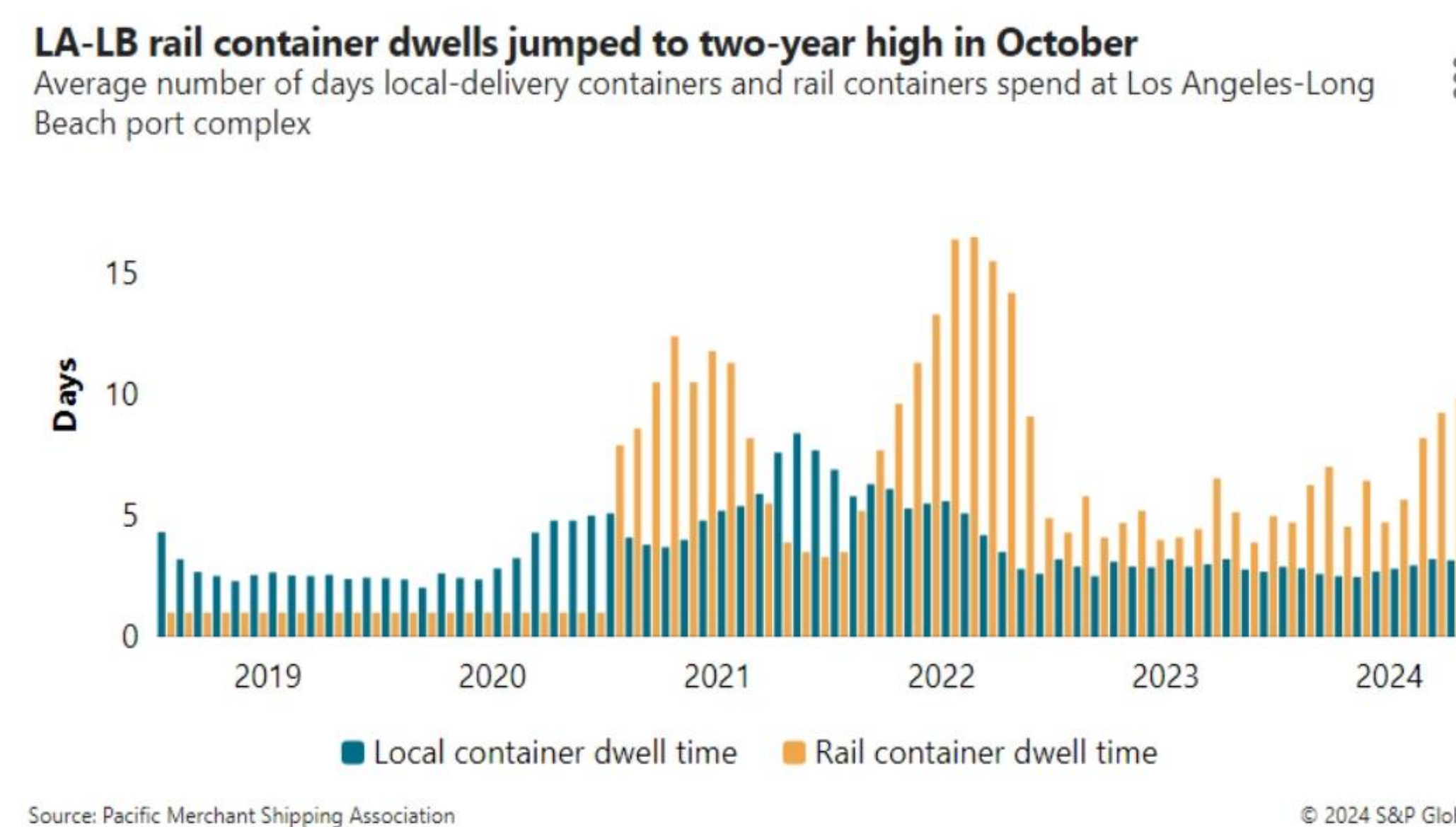
Intermodal freight moves goods across ships, rail, and trucks, linking critical global trade. Yet each modal handoff introduces risks like **theft, delays, and data gaps**.

In 2024, **cargo theft cost U.S. shippers \$455 million**, with billions more lost to disruptions. As e-commerce and sustainability demands grow, secure and transparent logistics are more critical than ever.

2. Key Challenges

- \$450M in U.S. losses (2024):** Thefts often occur during modal transfers and dwell times, targeting high-value goods.
- Ghost Capacity:** Unused transport lanes and phantom loads lead to wasted resources, inflated costs, and poor carrier utilization.
- Unauthorized Rerouting:** Unplanned route changes disrupt delivery schedules, weaken chain-of-custody documentation, and trigger compliance risks.
- Dwell Time:** Idle containers at ports and terminals slow operations, increase costs, and heighten vulnerability to theft and tampering.
- Visibility & Cybersecurity Gaps:** Outdated tracking systems and disconnected data streams create blind spots.

Figure 1: Rail Delays at LA-Long Beach Ports
Amid 2-Year High Container Dwell Times



3. Tech Spotlight: BloodHound GPS & Emerging Tools

- BloodHound GPS Tracking:** A multi-sensor device offering real-time location, motion, light, temperature, and human presence detection.
✓ Proven to reduce theft by over 40% in pilot programs.
- Blockchain** secures chain-of-custody records:
✓ Enables smart contracts for faster, error-free handoffs.
- Artificial Intelligence (AI)** using real-time and historical data:
✓ Predicts delays, optimizes routing, and identifies theft risk zones
- Digital Twins** simulate logistics networks to:
✓ Test scenarios, manage congestion, and improve planning

Figure 2: Image of Bloodhound's GPS technology unit looks like a container vent and is always painted to match the carriers' selected colors.



Figure 3: Logistics Processes with Blockchain

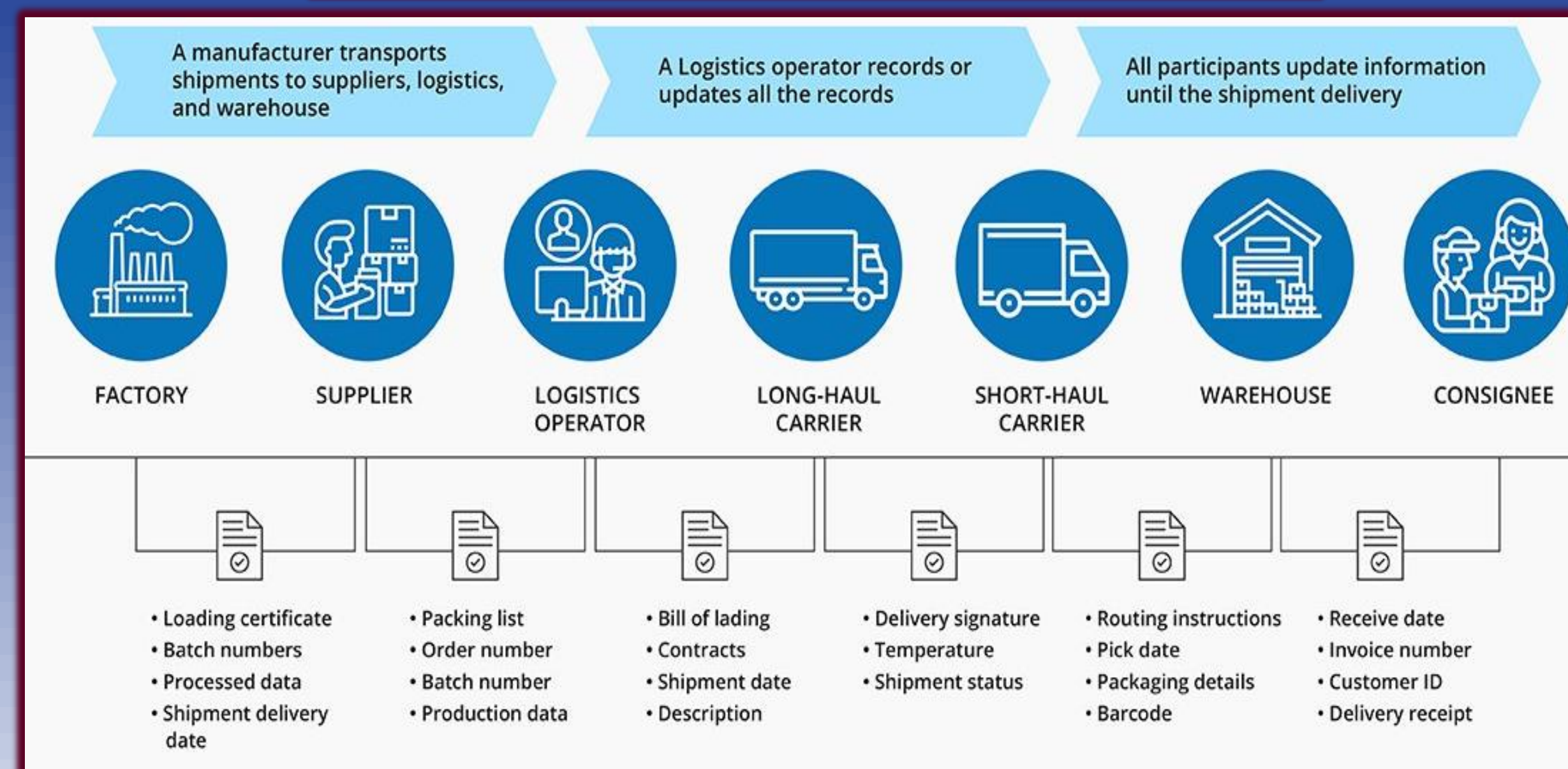
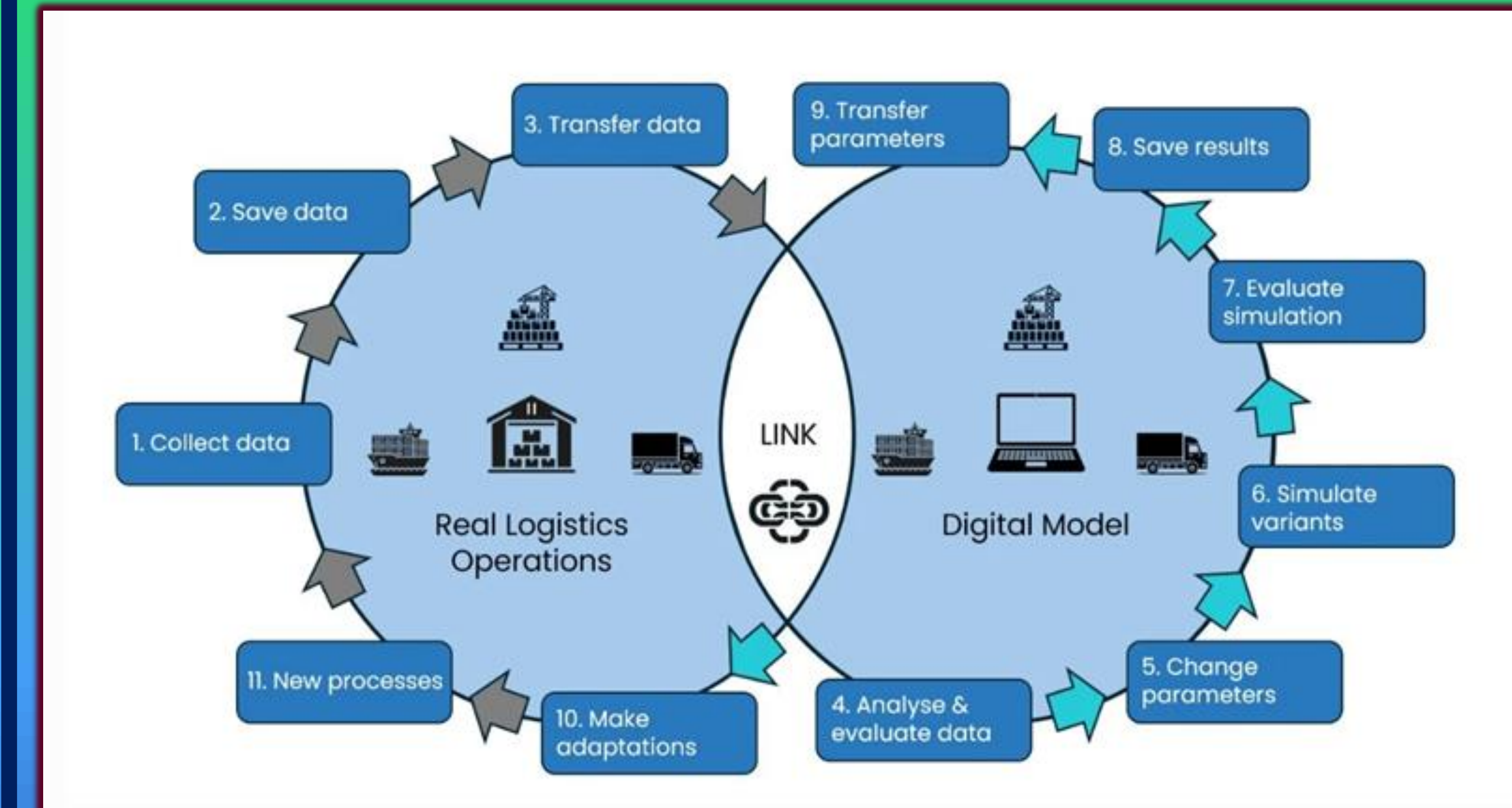
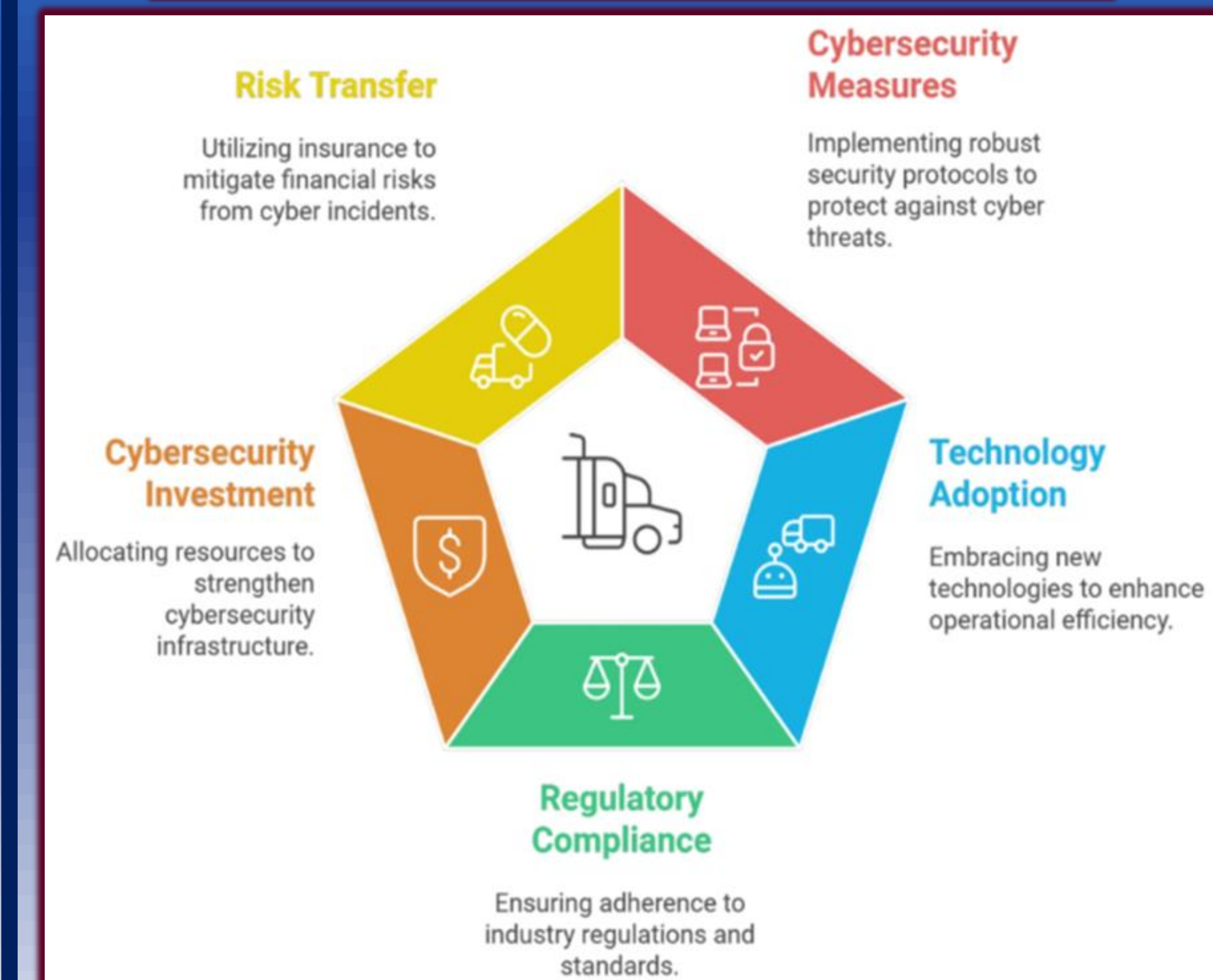


Figure 4: Digital Twins in Logistics flow chart



4. Future Benefits

Figure 5: Logistics Companies' Strategic Focus



References



Authors



Enhancing Intermodal Security and Visibility

Thank you IANA for sponsoring this research!

Christina Leen, David Zacher, William Day
Faculty Advisor: Margaret Kidd
Houston Maritime Center & Museum
University of Houston
Industry Advisor: Steve Schellenberg, BloodHound Tracking Device

