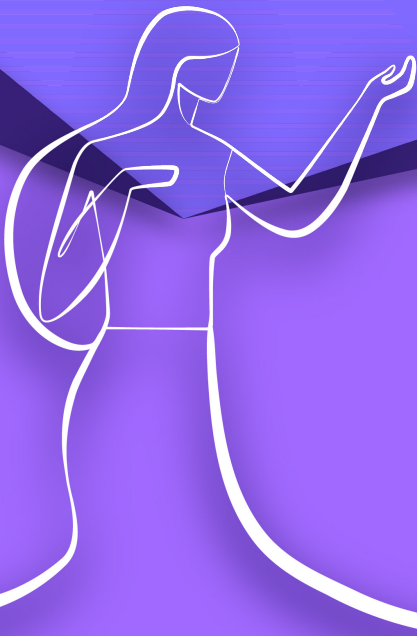


bett
● A Hyve Event

Women
in **EdTech**

EdTech 10 List

SUBMISSION GUIDE





Information about Nominations

- It is free to make a submission to the Bett Asia EdTech 10 List.
- You can nominate yourself or someone else.
- Those being nominated or nominating themselves for the Bett Asia EdTech 10 List must be based in a country in Southeast Asia (Brunei, Cambodia, East Timor, Indonesia, Laos, Malaysia, Myanmar, Philippines, Singapore, Thailand, or Vietnam).
- You may nominate multiple people - repeat the submission process for each person.
- The deadline to nominate yourself or others is 16 July 2026.
- Winners will be invited to attend Bett Asia 2026 from 23-24 September at the Mandarin Oriental in Kuala Lumpur, Malaysia, to take part in a prize giving ceremony.

The EdTech 10 List celebrates women in EdTech who are creatively using technology for good in education.

This guide will help you craft a compelling submission that highlights your achievements and aligns with the judging criteria.

When marking submissions, judges will evaluate the relevance to the EdTech 10 List mission statement, use of tech for good, impact and reach, innovative use of technology, and context. Each category is given a score from 0-5, using evidence from all the answers to the questions in the submission. Each category is weighted evenly.

While writing your answers to each question, be sure to follow the below guidelines:

- Be specific and avoid vague statements.
- Use examples and evidence to support your claims.
- Make your submission engaging by telling the story of your work and its impact.
- Ensure your submission is well-written and free of errors.
- Be mindful of the character count for each question.
- Feel free to use AI in your submission, but please ensure the ideas and content in the submission are your own.

QUESTION 1

Please provide a short description on your/the nominee's work in EdTech. What makes the you/the nominee a good candidate to be recognised in the EdTech 10 List?

Provide an overview of the work you do in EdTech and why it is important. Tell us how long you have been doing this, who you have worked with, why you have pursued this work and any other relevant information.

This category also reflects how relevant the applicant and their work is to the EdTech 10 List mission statement, which is outlined below:

The Bett EdTech 10 List is a celebration of women in EdTech, recognising women's role in shaping education through innovative, exciting solutions and practice. The initiative celebrates women who are creatively using technology for good in education.

To meet this criteria, please explain how your work and mission are relevant to the EdTech 10 List. Mention specific aspects of your work that align with the mission statement and explain why they are relevant.

QUESTION 2

The Bett EdTech 10 List is about celebrating women using tech for good. Identify 2 of the United Nation’s Sustainable Development Goals which are relevant to the work you do/the nominee does. How does your/the nominee’s work support these goals?

This category aims to help you articulate how your work aligns with the United Nations’ Sustainable Development Goals (SDGs) and demonstrate its impact. This category ensures we can celebrate the work being done which has social and environmental impact.

Ensure you familiarise yourself with the 17 SDGs established by the United Nations by using the website:

<https://sdgs.un.org/goals>.



To format your answer to this question, use the guide below:

1. Identify the two goals that are most relevant to your work.
2. Explain how your work aligns with each of the two selected SDGs, being specific about the connections and relevance.
3. Demonstrate how your work achieves these goals by showing tangible evidence. This can include data, examples, testimonials, or any other relevant proof. Clearly outline the outcomes and successes of your initiatives, focusing on measurable impacts and real-world benefits.

QUESTION 3

Describe the scope of impact of your/the nominee's work. How does your/the nominee's work impact others and what does that impact look like?

This question will help the judges assess who has benefited from your work, how they benefited, and how far it has reached. Don't worry, this question isn't asking for the quantity of people your work has impacted, but also the value of this impact. You can attach evidence to this question to demonstrate impact if relevant.

To answer this question, provide a brief overview of your work, including its objectives and target audience. Highlight the extent of your work's reach within the community.

If applicable, explain any significant or notable impacts your work has had. This could include long-term benefits or widespread changes. If your work has had an impact beyond your immediate community, be sure to mention this. Explain how your initiatives have reached a wider audience or influenced other communities.

QUESTION 4

How does your/the nominee's work innovatively utilise technology in education?

The EdTech 10 List is a celebration of women using technology innovatively in education. This question will help you explain how your work features technology.

To answer the question, clearly articulate how you are using technology in your work. Be specific about the tools and/or platforms you are using and highlight what makes your use of them innovative. Explain how your approach is unique or different from traditional methods, supporting this with examples.

If applicable, mention any broader benefits or long-term impacts that your innovative use of technology has had. This could include improvements in learning outcomes, increased engagement, or other positive changes.

QUESTION 5

Why is the work you do/the nominee does important for your community, region and country? Please highlight any regional challenges and how you have/the nominee has addressed these.

The Bett Asia EdTech 10 List recognises the different contextual challenges faced by women across Southeast Asia. This question provides an opportunity to explain how your work is relevant to these challenges.

Begin by providing a brief overview of the specific challenges faced in your region. These could be related to education, technology access, socio-economic factors, or other relevant issues.

Clearly articulate how your work addresses the identified regional challenges. Be specific about the strategies and solutions you have implemented.

GOOD LUCK

**for your submission to the Bett Asia 2026
EdTech 10 List.**

If you have any further questions about the initiative or making a submission, please visit [our website](#) or email us at asia@bettshow.com.

bett
• A Hyve Event

Women
in **EdTech**