



**TRADEPOINT
ATLANTIC**

| INDUSTRY IN MOTION

A MODERN INDUSTRIAL REVIVAL

- Demolished 17 million square feet of old industrial complex
- Environmental remediation continues and is on track
- Developed and leased 13.5 million sf. of distribution, warehousing & industrial facilities since 2014
- Completed 7 million sf. of new development since 2019
- Additional 2 million sf. of planned development in 2022
- Emerging 21st century global logistics and supply chain platform
- Modernized deep water port facilities
- Over \$2.0 billion of private investment to date
- 36 world class tenants and growing
- Over 12,000 new, permanent jobs and counting



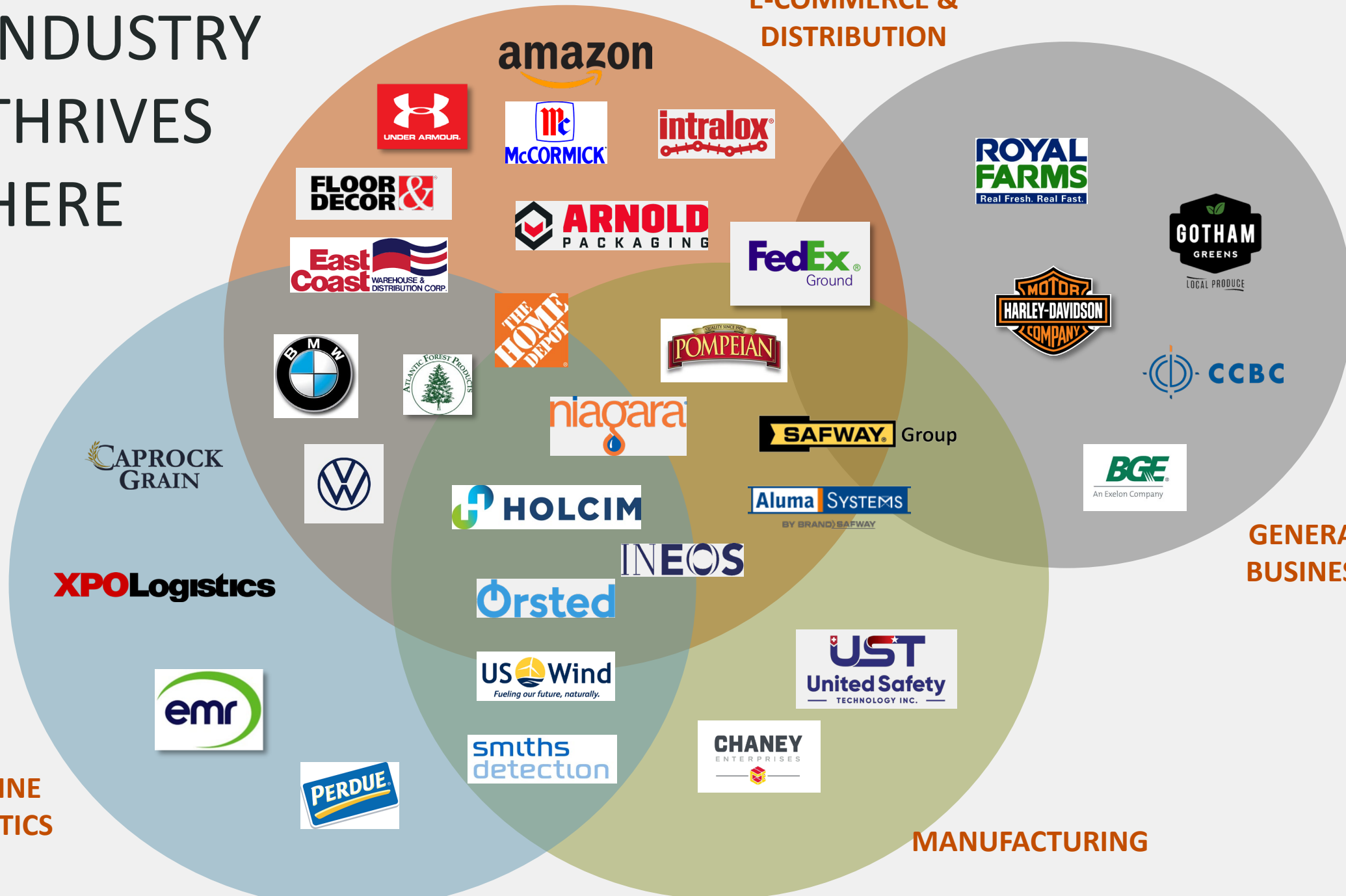
INDUSTRY THRIVES HERE

E-COMMERCE &
DISTRIBUTION

GENERAL
BUSINESS

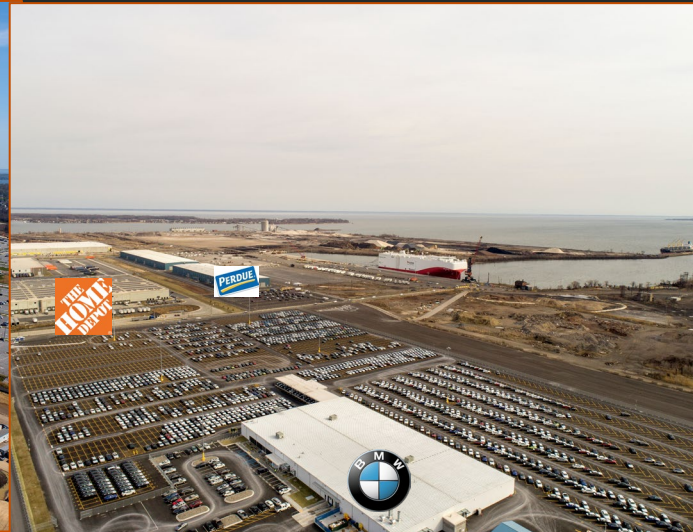
MANUFACTURING

MARINE
LOGISTICS



EXPERIENCED TEAM. PROVEN RESULTS.

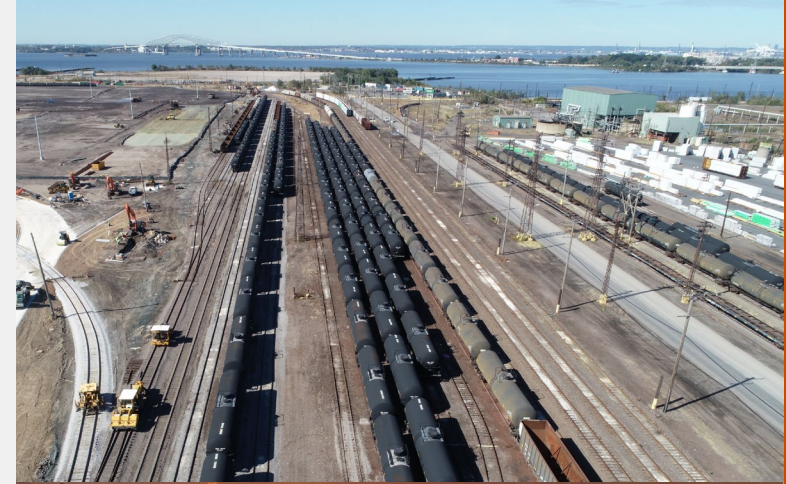
BUILDING AND DELIVERING FOR OUR CUSTOMERS



SHORTLINE RAILROAD

FLEXIBILITY & VERSATILITY OF SERVICE FOR MULTIPLE COMMODITIES

- Largest privately owned rail yard on the East Coast with direct connections and switching service to CSX and Norfolk Southern
- 70 miles of rail on property and opportunity for expansion
- Storage capacity of 2,500 cars
- Team of 20 professionals providing tailored solutions and full-service switching operations
- 21 active rail served customers
- Service to multiple on-site operations





OPTIONALITY. VERSATILITY.

TRADEPOINT TERMINALS SPECIALIZES IN THE EXPERT HANDLING OF MULTIPLE COMMODITIES & CARGOES, OFFERING A FULL SUITE OF PORT SIDE LOGISTICS SERVICES



- Vessel discharge & loading
- Customized storage solutions
- Material Processing
- Foreign Trade Zone operations
- Inventory management

BULK | BREAKBULK | RO/RO | PROJECT CARGO | OFFSHORE WIND



OFFSHORE WIND

TRADEPOINT ATLANTIC IS THE PREMIER LOCATION FOR OFFSHORE WIND ON THE US EAST COAST

Positioned in the Mid-Atlantic of the USEC, TPA provides logistical advantages at a single location for the offshore wind sector that no other facility can offer:

- Deep-water berths
- Significant acreage reserved for marine related operations
- Heavy lift capabilities
- Rail infrastructure
- Impressive menu of incentives
- Access to robust skilled workforce

